

CONTEST 41



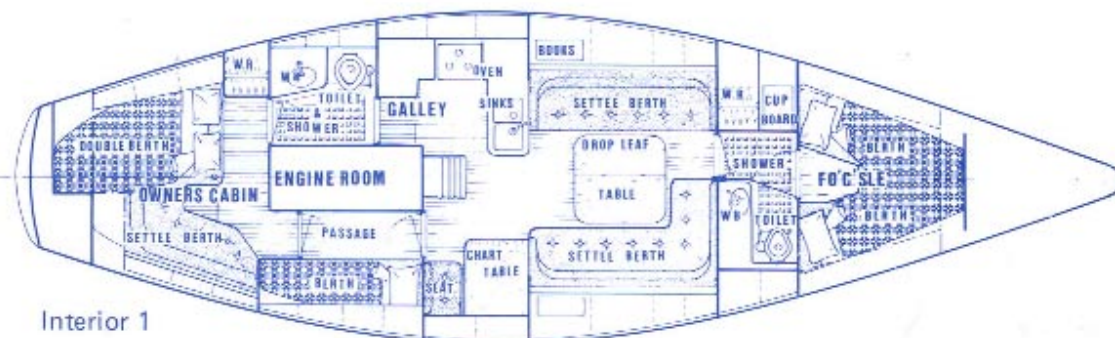
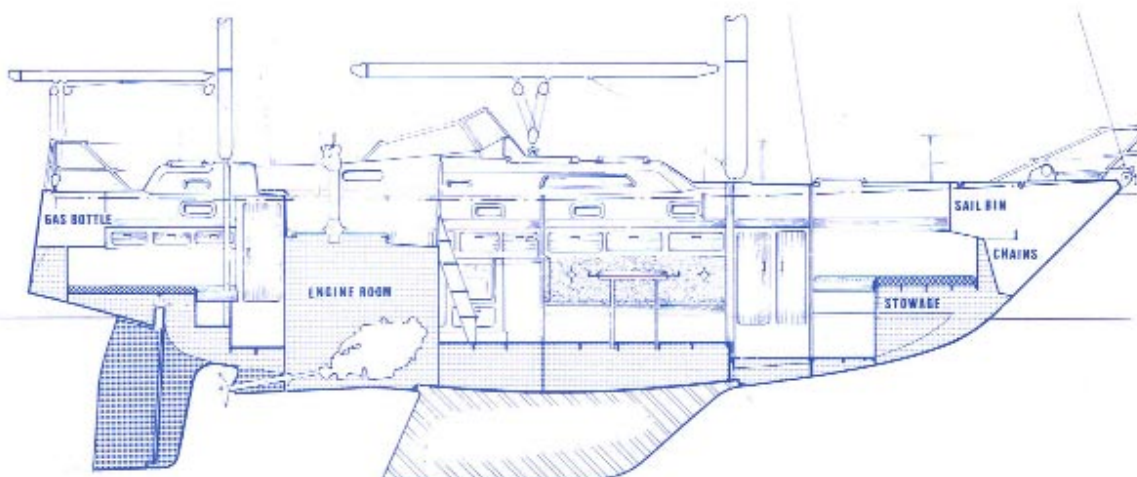
Contest



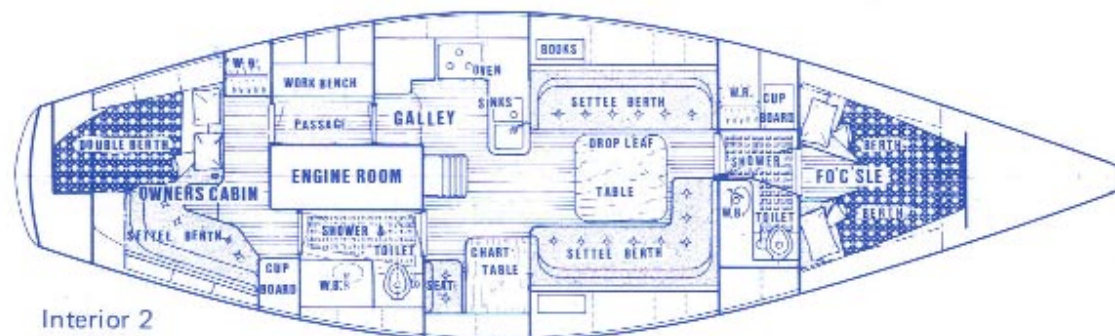
CONTEST YACHTS
ARE BUILT ACCORDING
LLOYD'S RULES

Technical Specifications:

Length o.a.	12.50 m	41'0"	Mainsail	35.50 m ²	382 sq.ft.
Length w.l.	9.90 m	32'6"	Mizzen	9.50 m ²	102 sq.ft.
Beam	3.85 m	12'8"	Mizzen staysail	28.70 m ²	309 sq.ft.
Draft	Standard 1.90 m	6'3"	Genoa	49.60 m ²	533 sq.ft.
	Winged Keel 1.50 m	4'11"	Genoa II	36.10 m ²	388 sq.ft.
Ballast	4.135 kg	9120 lbs	Fuel	350 l.	77 imp. gallons
Displacement	12.350 kg	27225 lbs	Water	600 l.	132 imp. gallons
Mastheight	17.56 m	57'7"	Engine	75 HP	Volvo Penta



Interior 1



Interior 2

